

Model: Model K- P3		Date: 2-Oct-03	No.: MG091001
Modified Article: Parts catalog correction		Prepared by: T.Shintani	
From: 1st Technical Support Sec. Service Support Dept.			
Reason for Modification:	<input checked="" type="checkbox"/> Parts catalog correction <input type="checkbox"/> To facilitate assembly <input type="checkbox"/> Part standardization	<input type="checkbox"/> Vendor change <input type="checkbox"/> To improve reliability <input type="checkbox"/> Other	<input type="checkbox"/> To meet standards (       )
Modification Schedule:	From first mass production.		

Please note the following changes.

Old Part Number	New Part Number	Description	Q'ty	Int	Page	Index	Note
G0918617	G0918625	Operating Instructions – AP600N	1→1	- / -	37	9	1
G0881940B	G0881930F	Operation Panel NA Ass'y	1→1	- / -	3	10	2
G0884643	G0524644	Upper Fusing Entrance guide (EU)	1→1	- / -	15	22	3
G0563270	G0763270	Manual Feed Table : Ass'y	1→1	- / -	3	18	4
G0563271		Bypass Front Cover –RIC Europe/Asia	1→0	- / -	3	19	4
	G0523272	Bypass Front Cover	0→1	- / -	3	19	4

**Notes:**

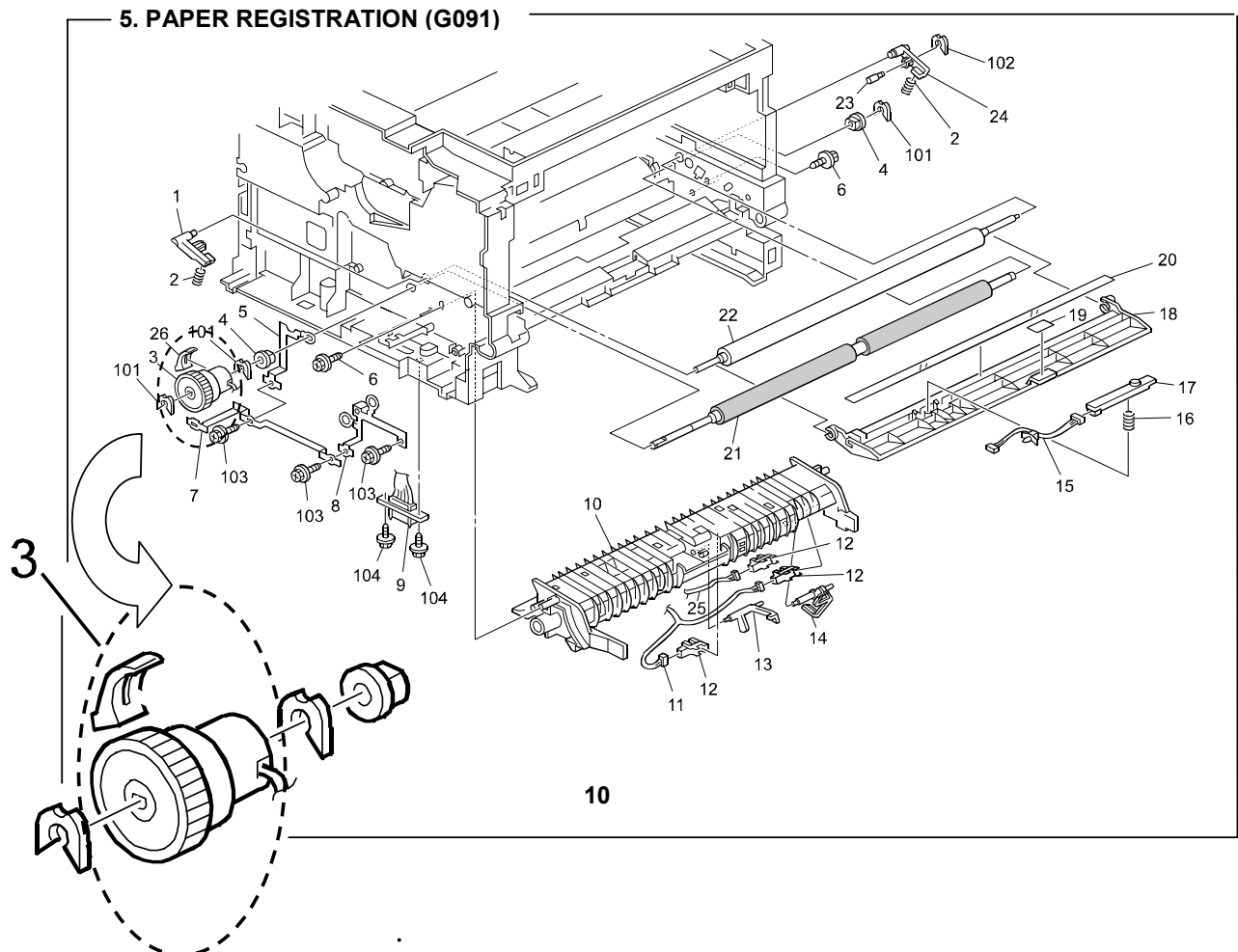
1. The O/I have been standardized with those for the General model (G091-11/G091-17).
2. The operation panel assembly for the EU model has been standardized with the assembly for the NA model (display changed from symbols to English).
3. (P/N misprint).
4. The bypass front cover has been standardized to the cover for the NA model (“Aficio” logo deleted).

Model: Model K- P3		Date: 17-Nov-03	No.: MG091002
Modified Article: Parts catalog correction		Prepared by: T. Shintani	
From: 1st Technical Support Sec. Service Support Dept.			
Reason for Modification:	<input checked="" type="checkbox"/> Parts catalog correction <input type="checkbox"/> To facilitate assembly <input type="checkbox"/> Part standardization	<input type="checkbox"/> Vendor change <input type="checkbox"/> To improve reliability <input type="checkbox"/> Other	<input type="checkbox"/> To meet standards ( )
Modification Schedule:	From first mass production.		

Please apply the following P/N corrections to your Parts Catalogs.

Incorrect Part Number	Correct Part Number	Description	Q'ty	Int	Page	Index	Note
AX200208		Magnetic Clutch – Z45	1→0	- / -	11	3	*
G0763321		Clutch Sleeve Cover	1→0	- / -	11	26	*
	▶ G0763205	Magnetic Clutch : Registration : Ass'y	0→1	- / -	11	3	*
11050292		Wire Saddle	1→0	- / -	23	110	
	▶ 08025276	Tapping Screw With Washer – M3×6	0→1	- / -	23	106	

**Note:** The illustration for the magnetic clutch assembly has been corrected as follows:



Model: Model K- P3		Date: 26-Apr-04	No.: MG091003
Modified Article: Engine Board		Prepared by: A. Ishiyama	
From: 1st Technical Support Sec. Service Support Dept.			
Reason for Modification:	<input type="checkbox"/> Parts catalog correction <input type="checkbox"/> To facilitate assembly <input type="checkbox"/> Part standardization	<input type="checkbox"/> Vendor change <input type="checkbox"/> To improve reliability <input checked="" type="checkbox"/> Other	<input type="checkbox"/> To meet standards ( )
Modification Schedule:	From first mass production.		

Two new engine boards have been registered in place of the one G0885123 board (service parts correction).

Incorrect Part Number	Correct Part Number	Description	Q'ty	Int	Page	Index	Note
G0885123		PCB EGB EXP ASS'Y	1→0		25	15	1
	G0885121F	PCB EGB ASS'Y - NA	0→1	X/O	25	15	2
	G0885122F	PCB EGB ASS'Y - EU	0→1	X/O	25	15	2

**Important Notes:**

**1. Old boards are still usable:**

**If the old G0885123 engine board has been ordered (in stock) or is installed on a machine in the field, please modify the board at the next service visit. See RTB RG091003 for the specific procedure and other details.**

**2. Usage with each model:**

Part No.	G091				
	11	17	22	27	69
G0885121	√	√			
G0885122			√	√	√

Model: Model K- P3		Date: 18-Aug-04	No.: MG091004
Modified Article: Controller Board		Prepared by: A. Ishiyama	
From: 1st Technical Support Sec. Service Support Dept.			
Reason for Modification:	<input type="checkbox"/> Parts catalog correction <input type="checkbox"/> To facilitate assembly <input type="checkbox"/> Part standardization	<input type="checkbox"/> Vendor change <input checked="" type="checkbox"/> To improve reliability <input type="checkbox"/> Other	<input type="checkbox"/> To meet standards (      )
Modification Schedule:	From July '04 production		

This change was made to stabilize the initialization of ASIC at the time power is turned on or reset:

- Resistor R524 (P/# 16504103) has been removed. A jumper wire was added to make a short circuit.

Old Part Number	New Part Number	Description	Q'ty	Int	Page	Index	Note
G0915701	G0915702	PCB Main EXP NIC	1→1	X/O	25	7	
16504103		Resistor – 10KΩ ± 5% 1/10W	53→52	-	31	179	

Model: Model K- P3	Date: 20-Jan-05	No.: MG091005
--------------------	-----------------	---------------

Modified Article: Stay – Paper Feed		Prepared by: A. Ishiyama	
From: 1st Technical Support Sec. Service Support Dept.			
Reason for Modification:	<input type="checkbox"/> Parts catalog correction <input type="checkbox"/> To facilitate assembly <input checked="" type="checkbox"/> Part standardization	<input type="checkbox"/> Vendor change <input type="checkbox"/> To improve reliability <input type="checkbox"/> Other	<input type="checkbox"/> To meet standards (      )
Modification Schedule:	From January '05 production		

Old Part Number	New Part Number	Description	Q'ty	Int	Page	Index	Note
G0523100	G1112571	Stay – Paper Feed	1→1	X/O	11	10	

**Change/Reason:** Parts standardization with the next model (Model K-P4).

Model: Model K- P3		Date: 20-Jan-05	No.: MG091006
Modified Article: Power Cord – 230V		Prepared by: A. Ishiyama	
From: 1st Technical Support Sec. Service Support Dept.			
Reason for Modification:	<input type="checkbox"/> Parts catalog correction <input type="checkbox"/> To facilitate assembly <input checked="" type="checkbox"/> Part standardization	<input type="checkbox"/> Vendor change <input type="checkbox"/> To improve reliability <input type="checkbox"/> Other	<input type="checkbox"/> To meet standards (      )
Modification Schedule:	From January '05 production		

Old Part Number	New Part Number	Description	Q'ty	Int	Page	Index	Note
GZ000003	G1025502	Power Cord – 230V	1→1	O/O	23	10	

**Change/Reason:** Parts standardization with the next model (Model K-P4).

**Note:** This applies only to the EU models (230V).

Reissued: 12-May-05

Model: Model K- P3	Date: 24-Feb-05	No.: MG091007a
--------------------	-----------------	----------------

### MB Correction

The items in bold italics have been corrected or added.

Modified Article: Transfer Roller		Prepared by: A. Ishiyama	
From: 1st Technical Support Sec. Service Support Dept.			
Reason for Modification:	<input type="checkbox"/> Parts catalog correction <input type="checkbox"/> To facilitate assembly <input checked="" type="checkbox"/> Part standardization	<input type="checkbox"/> Vendor change <input type="checkbox"/> To improve reliability <input type="checkbox"/> Other	<input type="checkbox"/> To meet standards (      )
Modification Schedule:	From January '05 production		

Old Part Number	New Part Number	Description	Q'ty	Int	Page	Index	Note
G0523616	G1116256	Transfer Roller	1→1		13	5	
G0523618	G1296251	Positioning Roller - Transfer	1→1	<b>See Note</b>	13	6	
G0763619	G1296252	Gear – Transfer Roller	1→1		13	4	
	G1296255	Bushing	0→2		13	28	

**Change/Reason:** Parts standardization with the next model (Model K-P4).

**Important:** *All of the new parts in the table must be installed together as a set. You cannot install the new parts individually.*

